

Historic Homes of Knoxville 3-D Craft Kit

This craft kit, designed by Knoxville illustrator John Lane (animatedlane.com), includes four construction models of historic homes in Knox County. **Did you know?** You can visit many of the Historic House Museums of Knoxville (as well as other cultural attractions) for free or reduced admission when you reserve a **Read City Explorer Pass**. *Requires a Knox County Public Library adult card.*

Reserve a visit at www.knoxcountylibrary.org/explore

James White's Fort

est.
1786



James White's Fort was the first settlement on the land where Knoxville is today. Originally built in the 1780s on the banks of First Creek where James White Parkway now runs, it was relocated in the 1960s to its current site across from the Women's Basketball Hall of Fame in downtown Knoxville. If James White was Knoxville's founder, why isn't it called Whitesville? Do you know who Knoxville is named for? jameswhitesfort.org

Historic Ramsey House

est.
1797



Historic Ramsey House was the first fancy stone house built in this area. Dating back to 1797 on Thorngrove Pike, the Ramsey family helped shape much of Knoxville as we know it today. In fact, Mr. Francis Alexander Ramsey helped establish Blount College, which later became the University of Tennessee. Can you imagine Knoxville without UT? They lived not too far from Marble Springs. Do you think the two families knew each other? ramseyhouse.org

Marble Springs

est.
1801



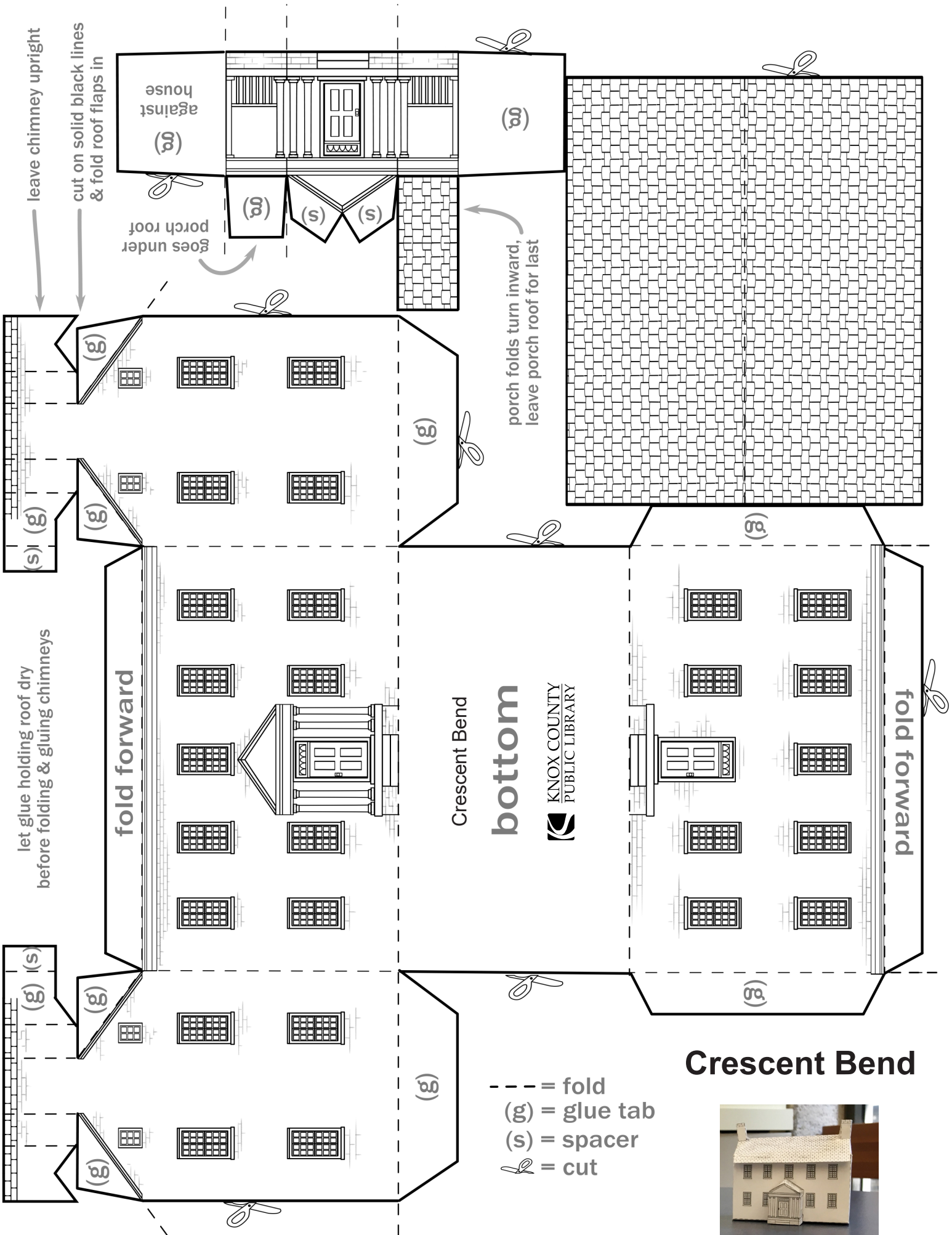
Marble Springs State Historic Site was the home of John Sevier, a Revolutionary War hero and the first Governor of the State of Tennessee. Built in the early 1800s on what is now Gov. John Sevier Highway, Marble Springs was a 350-acre farm named for the Tennessee Rose Marble that was quarried on site and the natural springs that flowed there. Can you think of other streets and places named for Governor Sevier? marblesprings.net

Crescent Bend

est.
1832

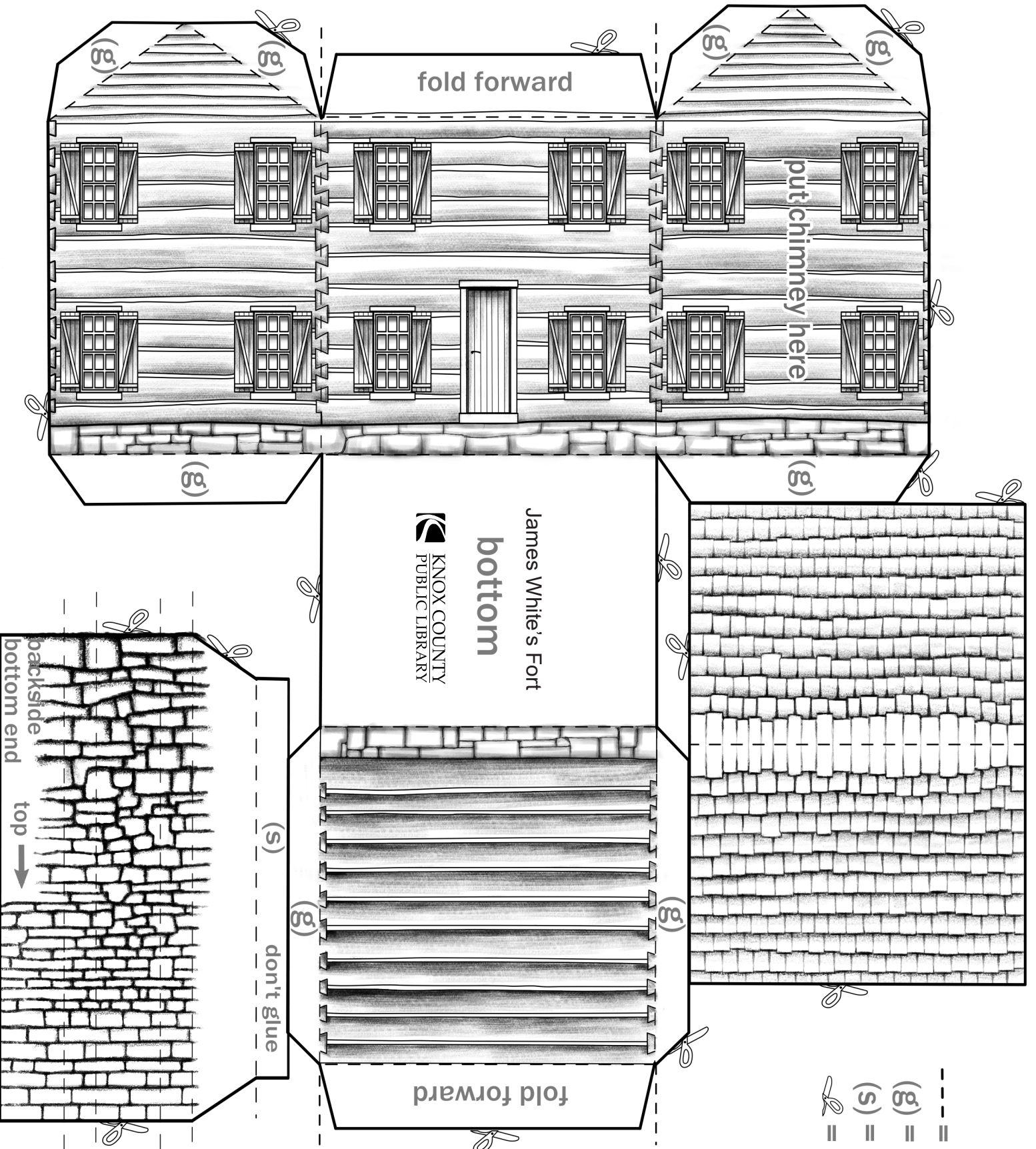


Crescent Bend was built by Drury Armstrong as a gentleman's farm on the bend of the Tennessee River. With 900 acres, it was one of the most prominent homes in the area and contains fine silver, art and antiques dating back to the 16th century. During the Civil War, the house was used by both Union and Confederate Armies as a command center and hospital. Do you think the people of this area fought for the Union or the Confederacy? crescentbend.com



Crescent Bend





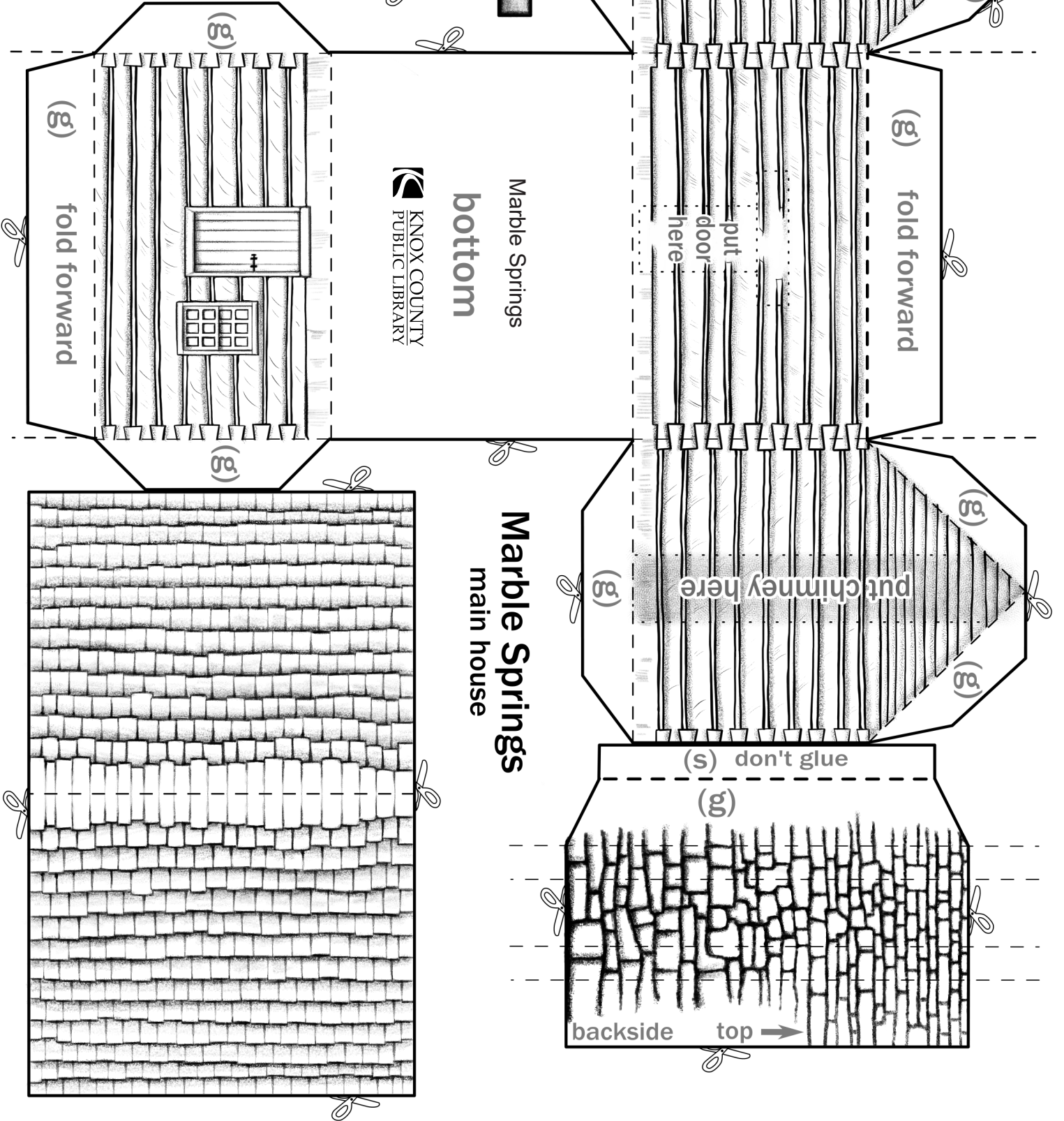
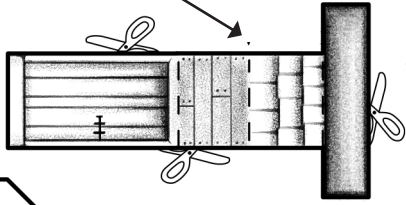
James White's Fort main house

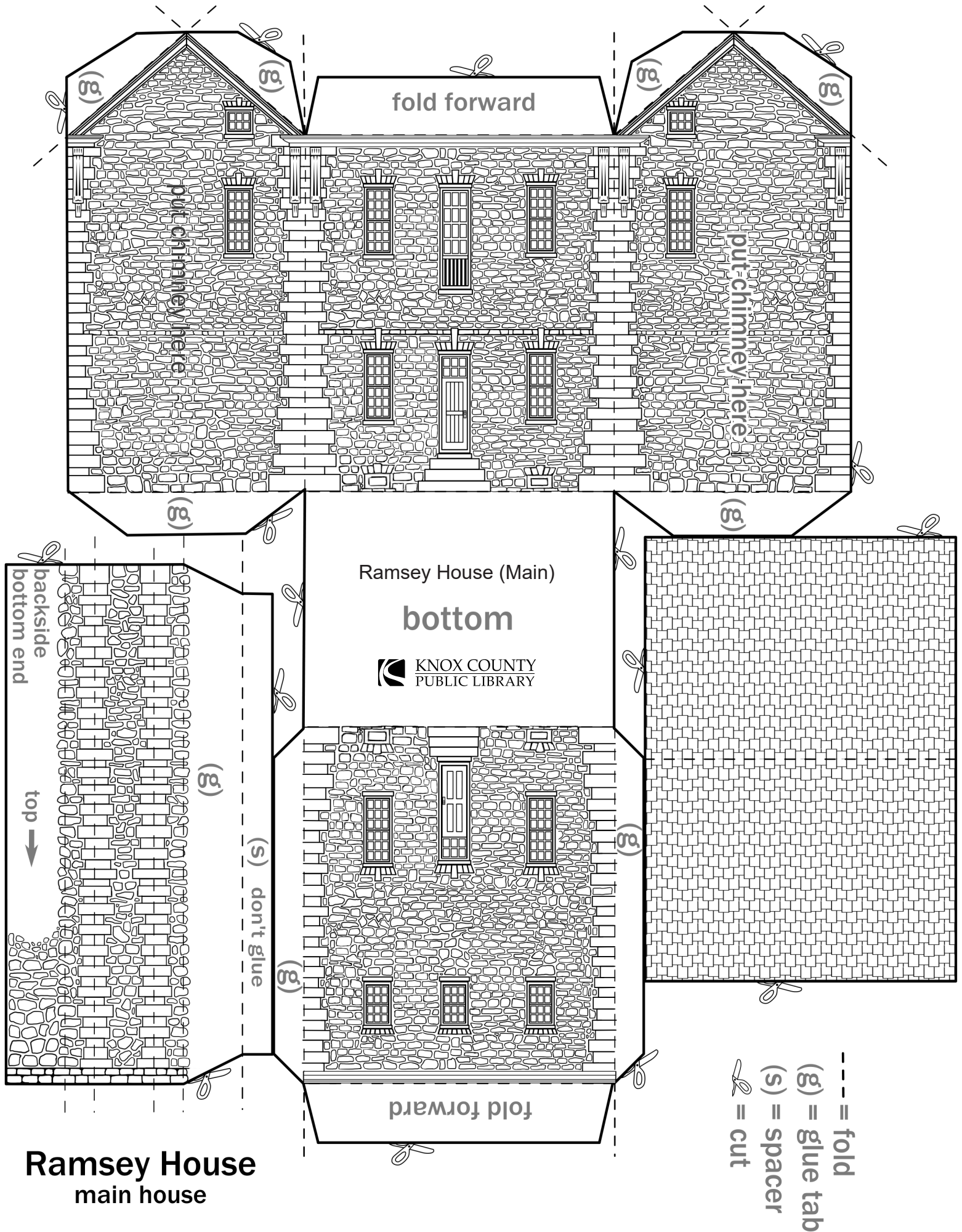


- = fold
- (g) = glue tab
- (s) = spacer
- ✂ = cut

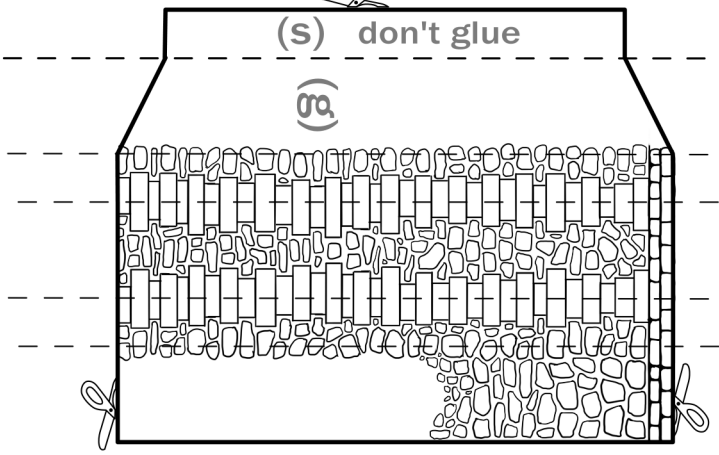
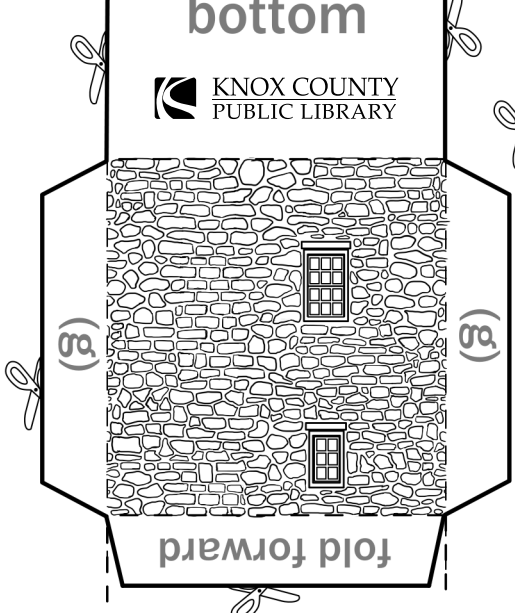
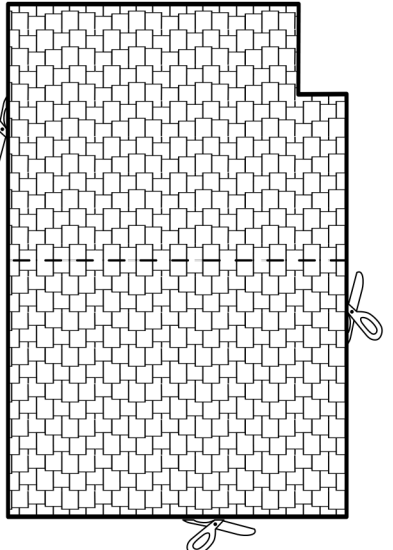
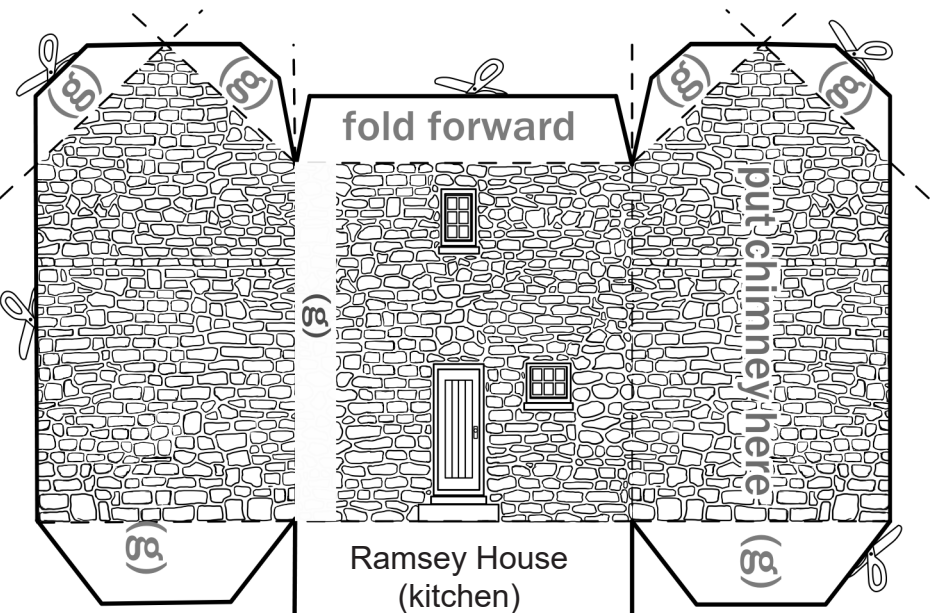
- = fold
- (g) = glue tab
- (s) = spacer
- ✂ = cut
- ... = place

fold edge
to poke
out for
porch





side of roof facing main house →



kitchen chimney

fold forward

put chimney here

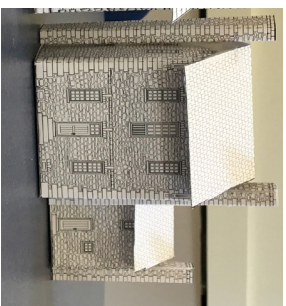
Ramsey House (kitchen)

bottom

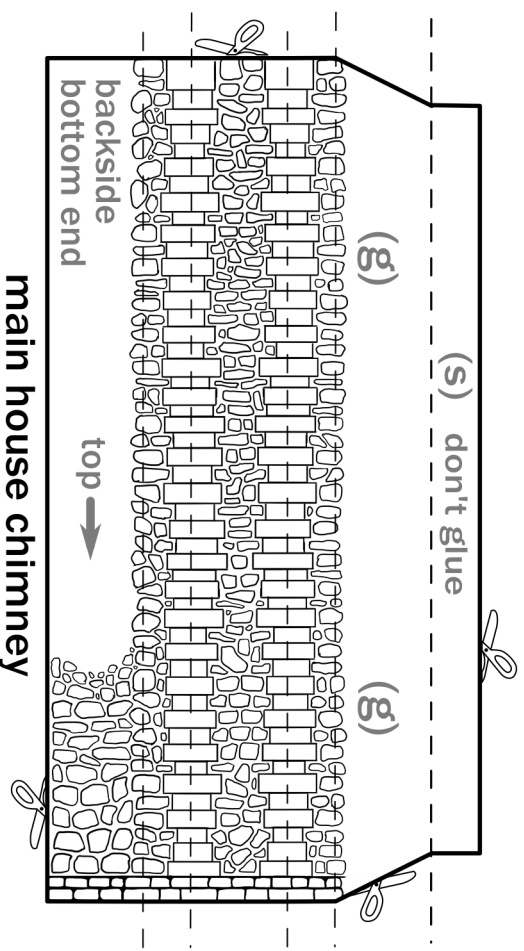


fold forward

- = fold
- (g) = glue tab
- (s) = spacer
- ✂ = cut



Ramsey Kitchen
plus main house
2nd chimney



main house chimney