

LIGHTHOUSE CRAFT

If you complete this activity, log another hour of reading in Read City USA's 2022 reading voyage, Oceans of Possibilities. Together, Knox County will read one million hours!
www.knoxcountylibrary.org

1. Color and cut out the tower, balcony, lantern room, and roof.

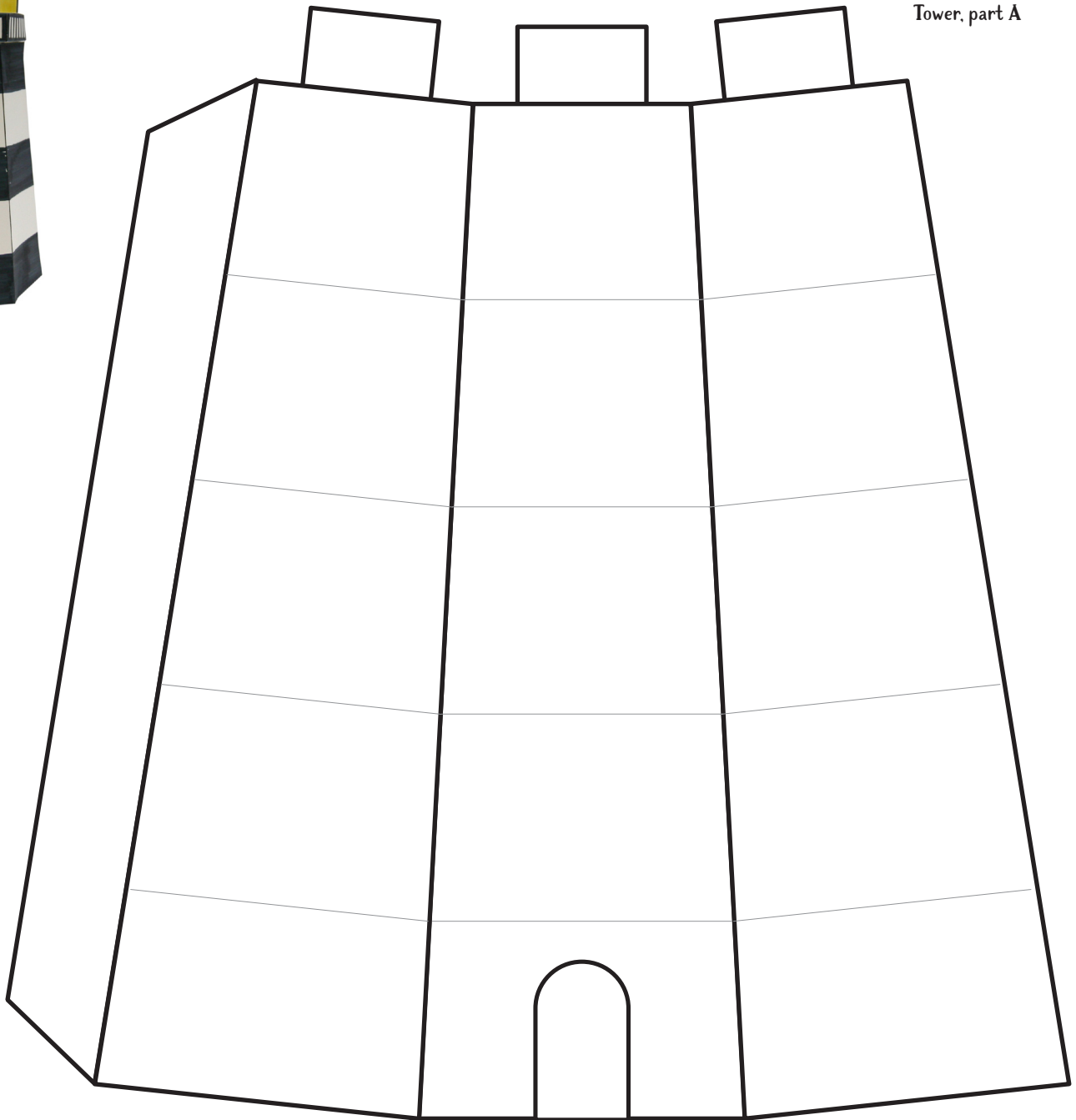
2. For the tower, fold each panel and glue or adhere sections A and B together, forming a hexagonal tower. Fold the top tabs inward. Set aside.

3. Assemble the lantern room in the same fashion, folding all tabs inward. Set aside.

For the balcony, turn the cutout facedown and fold each section up and the tabs in. Glue together at the tabs. Set aside.

Fold each wedge of the roof and assemble into a cone-like shape, adhering at the tab. Set aside.

Using the tabs, adhere the roof to the lantern room; the lantern room to the balcony (railings up); and the balcony to the tower.



Tower, part A

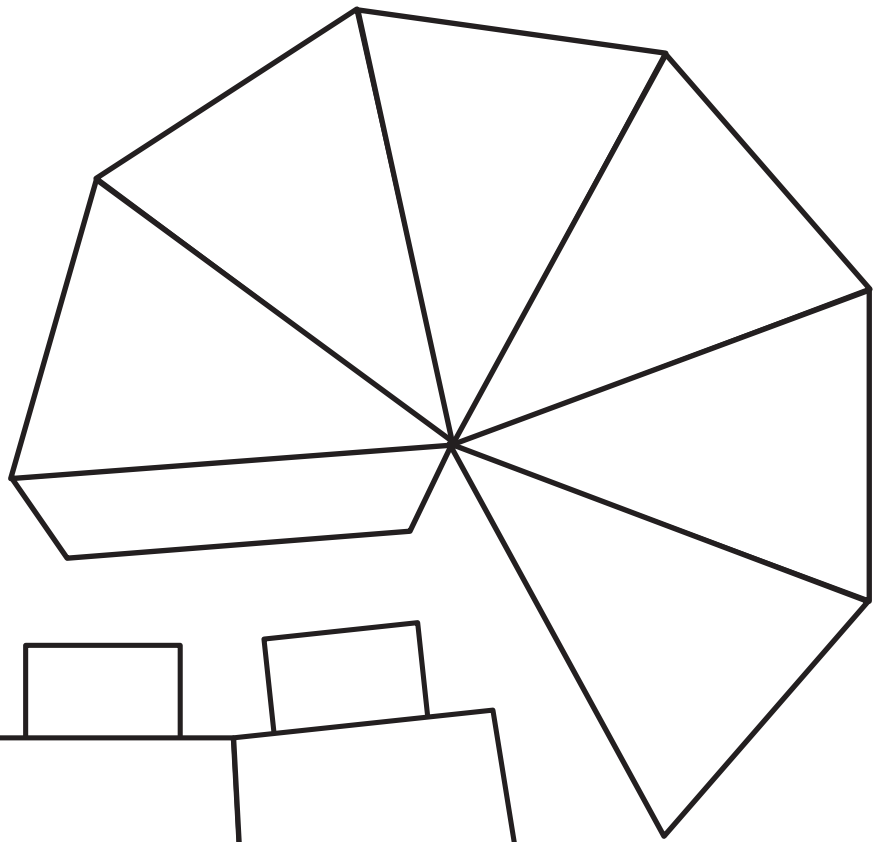
LIGHTHOUSE CRAFT



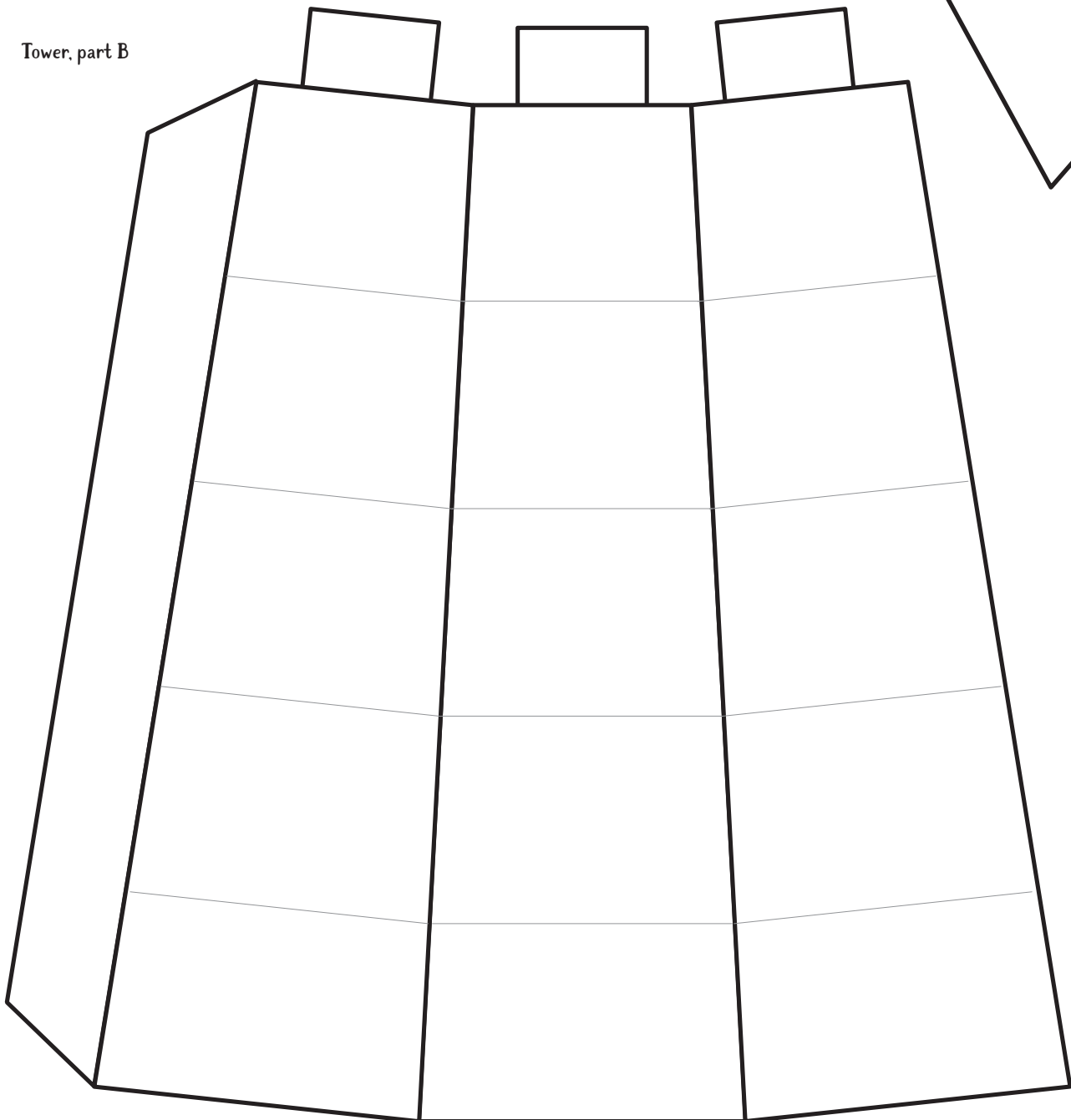
If you complete this activity, log another hour of reading in Read City USA's 2022 reading voyage, Oceans of Possibilities. Together, Knox County will read one million hours!

www.knoxcountylibrary.org

Roof



Tower, part B

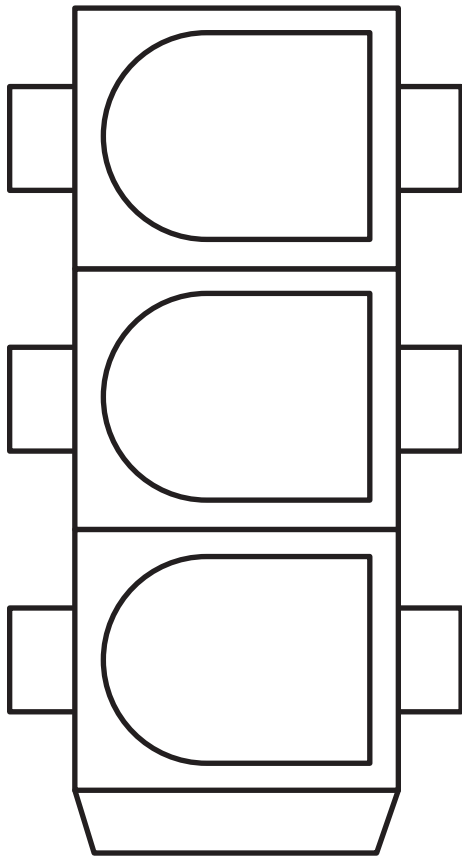


LIGHTHOUSE CRAFT

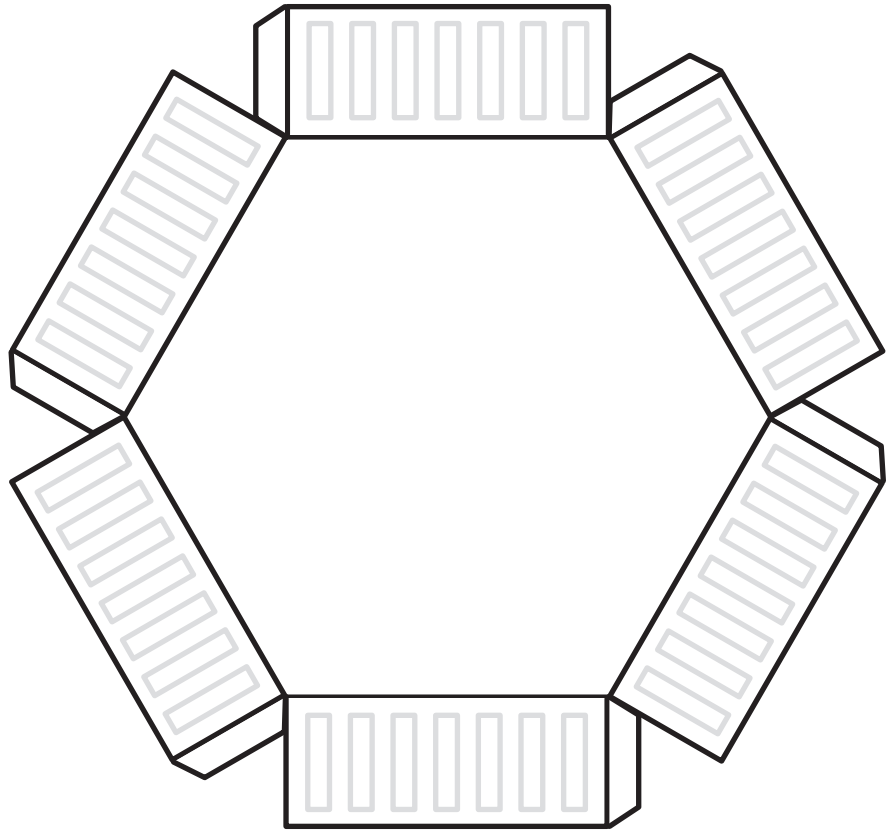


If you complete this activity, log another hour of reading in Read City USA's 2022 reading voyage, Oceans of Possibilities. Together, Knox County will read one million hours!

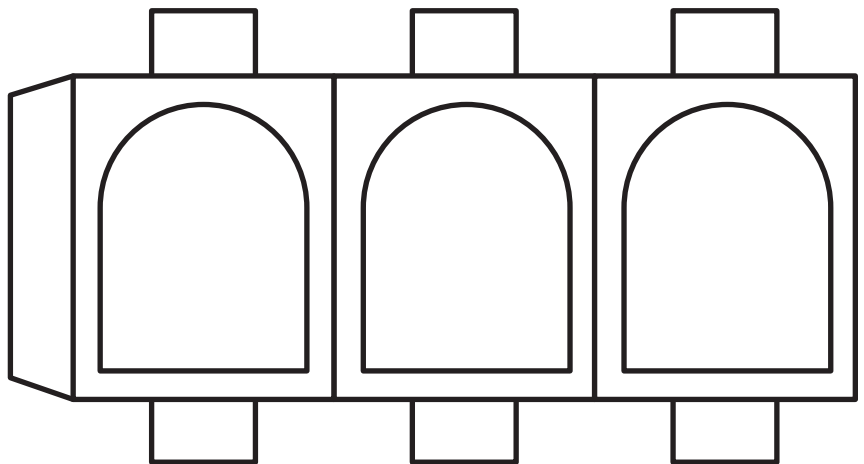
www.knoxcountylibrary.org



Lantern room, part A



Balcony



Lantern room, part B